



JOURNEYS TO COME

BY CATRIONA ROWNTREE



HOME | JOURNEYS | TRAVEL ESSENTIALS | SHOP CHIC AND LIFESTYLE | PRESS | CONTACT

Shleep Nap & Play Mat, and Half Moon Pillow for travelling

BY CATRIONA ROWNTREE THURSDAY, JULY 26, 2018

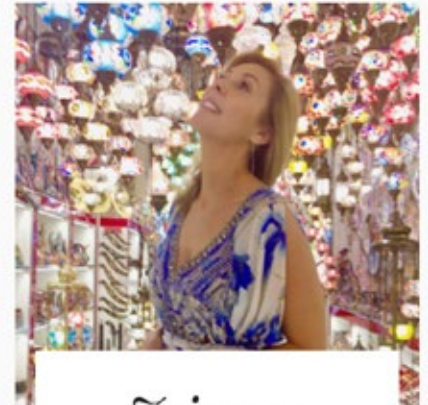


Sleep is the elixir of life and wool has been proven to be the best base to achieve a good night's sleep. I just think these products are great for travelling. Both the nap & play mat and the pillow are 100% fine Merino wool and machine washable. The Half Moon pillow was originally made for kids but adults are buying one for themselves and using it for travel and on the plane. On one side of the pillow is the super smooth, ultra-resilient, water and stain resistant ShleepTight™ and on the other, luxurious 20 micron thick pile ShleepSkin™ fleece. Shleep Nap & Play Mat \$650 & Half Moon Pillow \$170 www.shleepwell.com

No tags



Catriona Rowntree



*Join my
journeys to
come*

Wherever I am in the world, I'm always ready to talk travel and share stories, tips and more! Tune into my travel podcasts here.

[LISTEN NOW](#)

SUBSCRIBE & FOLLOW



Subscribe to my newsletter for exclusive content and all of the behind the scenes details

Your email address

[SUBSCRIBE](#)